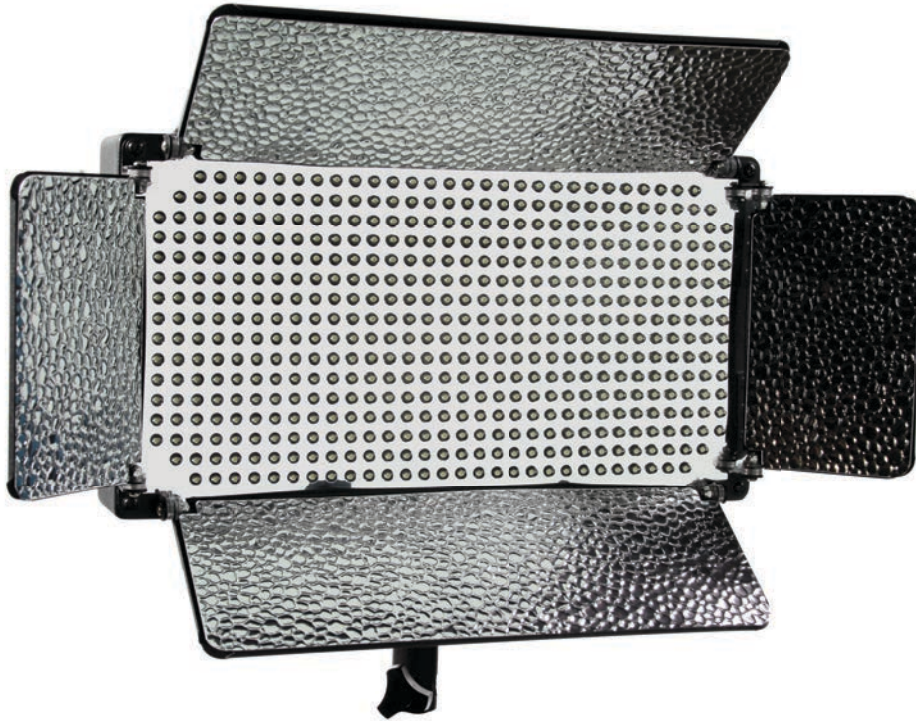


# ID500-v2

## 500 LED Studio Light QUICKSTART GUIDE

---



### What's included

- ID500-v2 Light
- AC Adapter + Power Cord
- Light Stand Adapter
- Handle
- Remote Control

Checked by

---

### CONDITIONS OF WARRANTY SERVICE

- Free service for one year from the day of purchase if the problem is caused by manufacturing errors.
- The components and maintenance service fee will be charged if the warranty period has expired.

Free Service will not be Provided in the Following Situations: (\* Even if the product is still within the warranty period.)

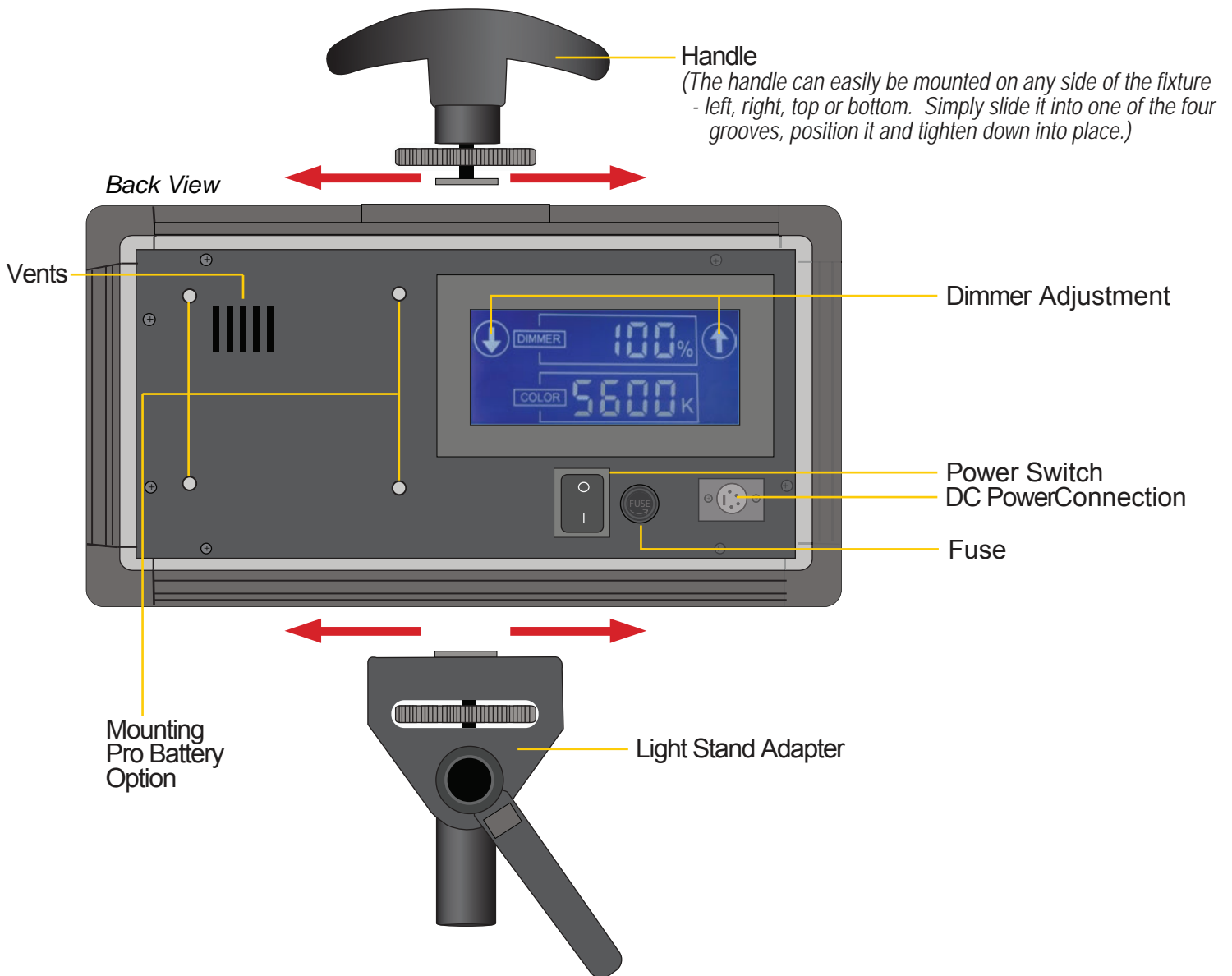
- Damage caused by abuse or misuse, dismantling, or changes to the product not made by the company.
- Damage caused by natural disaster, abnormal voltage, and environmental factors etc.

# ID500-v2

## 500 LED Studio Light QUICKSTART GUIDE

### GETTING STARTED

1. Connect the included AC Adapter to power the ID500-v2 light.
2. Turn the light on / off with the Power Switch.
3. Control the intensity of the light by adjusting the Dimmer up and down on the LCD control panel.
4. The ID500-v2 can also be powered by pro battery (optional accessories).



# ID500-v2

## 500 LED Studio Light QUICKSTART GUIDE

### Put it Where You Want It

The ID500-v2 comes with a movable and detachable Light Stand Adapter and Handle allowing you to mount your light either horizontally or vertically.



### SPECIFICATIONS

Operating Volts:	12v - 14.4v
Wattage:	30w
Brightness:	2.55Klux/50cm
Color Temperature:	5600K
Dimension:	13.8" x 7.5" x 2.7"
Weight (lbs):	5.8

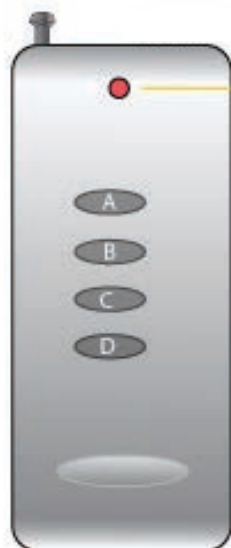
ikan

[www.ikancorp.com](http://www.ikancorp.com)

713-272-8822

# ID500-v2

## 500 LED Studio Light QUICKSTART GUIDE



Operation  
Indicator  
On/Off

### Remote Control Button Functions

Press and hold (A) for 5 seconds to sync remote control to light

Press (A) to power On/Off

Hold down (C) to increase light intensity

Hold down (D) to decrease light intensity

Press and hold (B) for 5 seconds to enable/disable sound

### ID 500 LUX Drop Off

